

# PERI scope

The periodical for the construction industry

IN 1 2025

In Focus

## Core Climbing for composite structure

Capital Land Data Center, Hyderabad









# Dear Reader,



Welcome to this latest edition of our PERI Scope, where the backbone of construction takes center stage. Whether you are an industry veteran, an engineer, or simply intrigued by the world of formwork and scaffolding systems, we're excited to bring you the latest insights, trends, and innovations in these essential areas of construction.

In this issue, we explore the critical role these systems play in shaping the infrastructure around us, from towering skyscrapers to complex bridges. You'll find articles that dive into cutting-edge technologies, sustainable materials, and the evolving safety standards that guide our industry forward. We also feature in-depth case studies on major projects, offering lessons and inspiration for professionals navigating the challenges of modern construction. PERI India has successfully executed iconic projects like the Thal Sena Bhawan, Mumbai Trans Harbour Link, Statue of Unity, ITC One Colombo, BKC Metro Station, Okhla Sewage Treatment Plant, The World Tower Mumbai, and Mahatma Mandir Gandhinagar. We have also come closer to you with five regional and two branch offices fully equipped with engineering and site support.

Formwork and scaffolding are more than just facilitators of construction; they are key enablers of progress, precision, and efficiency on job sites around

the world. Through expert perspectives, interviews, and detailed features, we aim to equip you with the knowledge and tools you need to stay ahead in this ever-evolving field.

As we are moving forward in our journey, we are capturing new opportunities and facing new challenges that will define the industry in the years to come. A further major factor influencing how building will develop in the future is the increased focus on sustainability. By emphasizing environmentally friendly materials, cutting waste, and making formwork systems more reusable, we are supporting greener building practices that help achieve long-term environmental objectives.

Alongside these innovations, safety remains a top priority—both in terms of the physical well-being of workers and the structural integrity of the built environment. With an ever-tightening focus on safety standards, PERI continues to develop systems that protect workers while ensuring the highest quality of construction.

Thank you for being a strong support to us and we hope this issue sparks new ideas and practical solutions for your projects. Together, we continue to build stronger, safer, and more innovative structures.

A handwritten signature in black ink, appearing to read 'Raj Lakhani', with a horizontal line underneath.

Sincerely,  
Raj Lakhani  
Managing Director  
PERI India Pvt. Ltd.

# Content

## Editor

PERI (India) Pvt Ltd  
1406, DLH Park, S.V. Road,  
Goregaon (W), Mumbai,  
Maharashtra 400062  
Tel: +91 (22) 2876 7400

## Responsible

PERI (India) Pvt Ltd

## Editor-in-chief

Dhaval Suthar

## Editor

Vaishnavi Khirwadkar

## Editing and graphics

PERI (India) Pvt Ltd

## Photos

PERI (India) Pvt Ltd

## Print

IN en | 2025

## Copyright

The photos used in this brochure feature certain situations at particular moments on various construction sites. Additional images, e.g. regarding safety and anchor details, cannot always be considered as conclusive or final. These are subject to the risk assessment carried out by the contractor.

© PERI SE



## 6 Core climbing for composite structure using RCS system

Capital Land Data Center, Hyderabad

## 7 Indian Army's New HQ with PERI UP MI

Thal Sena Bhawan, New Delhi

## 8 PERI UP FLEX for Industrial Plant

Nestle Plant, Sanand

## 9 ALPHADECK for flat slabs of IT commercial complex

Prestige 13 Degree North, Bengaluru

## 10 RCS climbing system for core area

Lodha Malabar, Mumbai

## 11 Thorough formwork solution for commercial building

Mondeal One, Ahmedabad

## GRIDFLEX for Ahmedabad's first Twin tower

Trogon Twin Towers, Ahmedabad

## 12 Holistic Formwork for Commercial tower

M-Kautilya, Pune

## 13 Exhaustive formwork solution for Gujarat's tallest building

Titanium World Tower, Ahmedabad



**14 PERI Shore for Hospital Building**  
Homi Bhabha Cancer Hospital, Muzaffarpur

**15 Shoring for residential building using PERI UP MI**  
Lodha Casa Evergreen, Mumbai

**Multi-panel formwork system for columns**  
Raheja Mindspace, Hyderabad

**16 RCS with edge protection system for high-rise building**  
Sugee Marina Bay, Mumbai

**PERI UP MI for Multi-Level Car Parking**  
MLCP, Vadodara

**17 HANDSET ALPHA for sewage treatment plant**  
STP, Moradabad

**RCS climbing system for safe working at heights**  
Bhojwani Towers and Rustomjee La Vie, Mumbai

**18 Lightweight formwork system for retaining and core walls**  
Kasturi Catalyst, Pune

**SCS Climbing system for Preheater building**  
J K Cement Preheater building, Panna

**19 Comprehensive formwork solution for Institution**  
Anant National University, Ahmedabad

**20 MULTIFLEX for a Shopping Mall**  
Phoenix Mall, Kolkata

**SCS Climbing and PERI UP MI staircase solution for Silo**  
Piramal Silo Project, Kosamba

**21 PERI UP FLEX for Surge shaft of 90 m**  
Surge Shaft, Himachal Pradesh

**22 System formwork solution for beam and slab**  
Rubamin Project, Halol

**Versatile panel formwork solution for Center of learning**  
Civil Service College, Mauritius

**23 LIWA formwork for Spiritual building**  
Isha Foundation, Coimbatore

**Crane-free panel formwork for columns**  
Adani Link Bay, Mumbai

**24 RCS P edge protection for the largest urban renewal project of India**  
Saifee Burhani Upliftment Project (SBUT), Mumbai

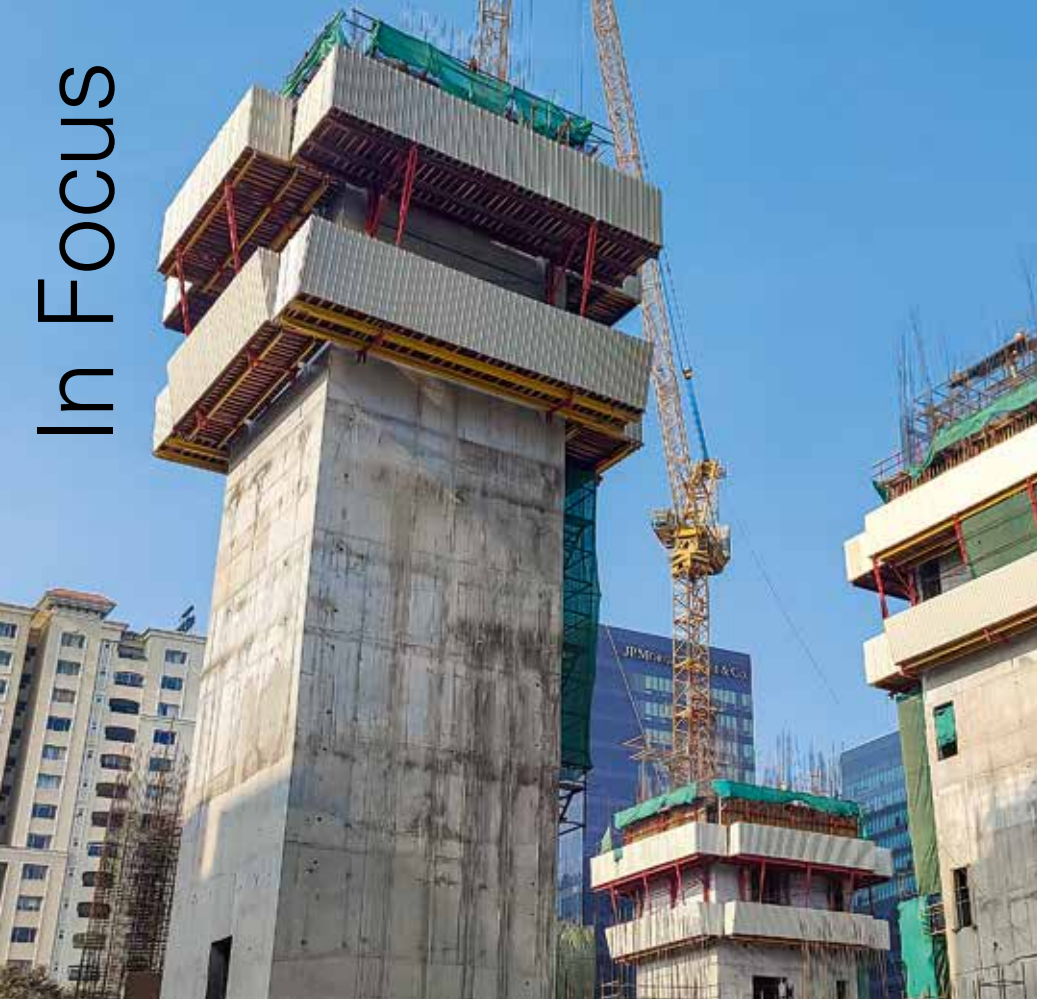
**Efficient formwork solution for mid-rise building**  
Adani Paarijat, Ahmedabad

**25 Technopolymer formwork system for high rise building**  
Golf Hills, Gurgaon

**26 News**







**Mr. Parthiban G S**  
Project Director, URC Construction Pvt. Ltd.

"We used the RCS core climbing system from PERI for this project. Its advanced characteristics are a perfect fit for the project specifications, enabling a smooth integration into our composite structure workflow. It was also the best option for achieving our strict deadlines because of its crane-independent design, which greatly increased efficiency and saved crucial time. The PERI team's assistance during the design phase and on the project site made sure that everything went according to plan."

# Core climbing for composite structure using RCS system

Capital Land Data Center, Hyderabad



Capital Land India Trust is making significant progress in the construction of its data Centre at the International Tech Park campus in Madhapur. The data center is designed with a power load capacity of 40 MW. The project involved 5 Core walls which had to be taken ahead of the slabs.

The challenge was to complete initial pours of core walls as early as possible as the steel members of composite slabs installation was planned in shorter time gap. Additionally, the cranes were engaged in activities of erection of steel structures which made the client to go with RCS Climbing system which is a crane independent system and completely moved by hydraulic jacks and pump.

PERI provided complete formwork solution for the project. VARIO wall formwork with RCS (hydraulic climbing) was supplied for each core wall to complete the project within stipulated timeline. The total height of the building was 54.1 m which consisted of 15 pours each of 3.6 m height. With the PERI solution, the client was efficiently able to achieve 4-5 days cycle time in 2 of the DG buildings and 6-7 days cycle time in the other 3 core walls. With its engineering and site supervision support, all challenges at site are well addressed including the training of contractors and labours for advanced technology. PERI solutions also ensured timely completion of the project.



# Indian Army's New HQ with PERI UP MI

Thal Sena Bhawan, New Delhi

---

The Indian Army's new Thal Sena Bhawan(TSB) is a 39-acre site built up on an area of 143,450 sq. m. The Thal Sena Bhawan project aims to modernize infrastructure for the Indian Army. The building aims to be a Net Zero Building, featuring a compost plant, sewage treatment plant, solar panels, and electric vehicle charging facilities.

PERI provided complete solution with MULTIFLEX with PERI UP MI shoring system for the slab formwork and HANDSET ALPHA formwork system for retaining walls. The building has a floor area of 17,000 sq m with around 400 columns. We cast a column of 4.5 m in a single pour which helped the customer to save time, money and complete the project as per the cycle time. The quantity of material was decreased to around 35-40 %. The gravity lock system in PERI UP MI system makes the system easier to handle and assemble. Additionally, site supervision and design support was provided all throughout the project duration.



"From the very first stage, PERI design team provided an economical, time and cost balanced solution. PERI system has performed very well in this project. With support of PERI systems, we have achieved desired project timeline for the project. The site support team helped us to train the work force. They also provided us with a solution specific to our requirements. The system is a robust and hassle free which made the project a success."

**Mr. Sukhamoy Mahadani**, Asst. General Manager, ITD cementation India Limited

---



# PERI UP FLEX for Industrial Plant

Nestle Plant, Sanand

---



NESTLÉ India, with a legacy spanning over a century, has firmly entrenched itself across the Indian subcontinent. Presently, it is the 2nd largest FMCG in India. They came up with a new plant facility at Sanand.



**Mr. Sagar Patel**  
Director, PSP Projects Ltd.

PERI provided complete solution for access, facade and reinforcement scaffolding using PERI UP FLEX system. The same material was then used for slab and beam formwork. Since safety was a huge priority on this site, so PERI UP FLEX was a perfect fit for every scaffolding setup.

This project was challenging because we needed to move and adjust the system to different buildings according to the construction schedule. PERI worked as a scaffolding partner for the project and worked together with consultant, contractor and client.

To make sure everyone knows how to use the scaffolding correctly, our team regularly held training sessions. These sessions taught the site workers to use the systems effectively and with utmost safety.

“The modular design and ease of assembly of PERI UP scaffolding systems accelerated our construction activities at site with enhanced productivity of labours as well where we deployed more than 1000 Ton of Scaffolding. PERI has been a reliable partner, offering all technical support from the initial planning stages to the final execution with the approval of client. Thanks to the well-engineered scaffolding, our labourers could access even the most challenging areas with ease, minimizing fatigue and improving overall job satisfaction.”





# ALPHADECK for flat slabs of IT commercial complex

Prestige 13 Degree North, Bengaluru

---

Prestige 13 Degree North Project is spread across 8.925 acres of prime land along the Marathahalli-Sarjapur outer ring road of Bengaluru and is part of the overall Prestige Tech Park master plan. The Tech Park is around large software companies, business establishments, entertainment centers to mention a few. Located on the national highway-44, Kadubeesanahalli is a developed corporate hub in the Bangalore East. It houses some of the top multi-nationals. This project is located near to the international airport & has a hotel, Mall & Office spaces.



Prestige tech park current expansion includes a total area of 15000 m<sup>2</sup>. Slab formwork solution needs to take care various floor to floor heights. Customer was looking for the comprehensive formwork solution that provides good concrete surface finish and faster cycle time. They were using conventional method earlier but after using PERI's products and services, they have completed the project before the timeline. They are happy with the finishing, speed of the work and our support.

PERI provided complete formwork solution for the project including slab, beam and column capital. PERI ALPHADECK was used for slabs of 250 mm thickness with a floor-to-floor height of 5 m. For beam and column capital MULTIFLEX system was used. ALPHADECK being a light-weight formwork helped in achieving better labor efficiency at site with excellent concrete finish.



"Modern modular light-weight formwork technology is required due to the constantly changing demands and challenges associated with the construction industry. PERI ALPHADECK was chosen for this esteemed project. We have been able to overcome obstacles such as a shortage of skilled labor and achieved high labor efficiency. The solution we were given had several benefits for the project: it improved cost effectiveness with high repetition use, provided much-needed speed of building, and had great concrete surface finish quality."

**Mr. M. Chandrashekar**, DGM-Projects K2K Infrastructure Pvt. Ltd.

---



# RCS climbing system for core area

Lodha Malabar, Mumbai

Located on the iconic Walkeshwar Road, opposite the Governor's estate, touching both the Arabian Sea and the Hanging Gardens, Lodha Malabar is the one of the iconic and luxury residential project in Mumbai, India. It is a 134 m height residential project with 31 level habitable floors.



PERI provided solution with RCS core climbing system and VARIO for the wall formwork system. The floor-to-floor height cast using VARIO was 3.65 m. For core climbing, PERI supplied 2 units of RCS CT, 7 units of RCS CL, 9 units of RCS TL, 26 units of RCS SP and a BR Shaft platform. The core concrete is divided in two pours with VARIO.

The VARIO VT 20 girder wall formwork system includes simple planning, minimum on-site material requirements and fast, efficient formwork sequencing.

Every issue on site was effectively resolved with the help of the engineering and site supervision teams. PERI solutions also ensured ease of handling and

speed of construction of the project. This project was a combination of new and existing material, which helped to reduce the overall cost of the project.



"The project cycle time was set at 16 days. We required a double hanging staircase and anticipated a 2-3 day pour gap. The significant part of the challenge involved completing the dowels in the pull-out box and navigating logistical issues. PERI helped address these challenges by providing crucial support and solutions. Additionally, we had to make provisions for working in the yard and adapt by using existing materials where possible."

**Mr. Elangovan**  
Eversendai Construction Private Limited



# Thorough formwork solution for commercial building

Mondeal One, Ahmedabad

**Mondeal One is a commercial building built in a 1769.92 square feet area located in Ahmedabad, Gujarat and reaching to a height of 154 m in the sky.**

This project is a crucial project as this structure would be the second tallest commercial building of Gujarat. Project required formwork solution for slabs, walls, and columns for the commercial building.



PERI provided edge protection system RCS-P and in total 23 units were provided. Additionally, we provided solution for slab with SKYDECK formwork system and HANDSET ALPHA system for walls and columns.



“We have been using PERI’s products and services from the past 15 years. RCS-P edge protection system has made the project work safe and secure for the manpower. PERI’s Skydeck Slab system and Handset Alpha wall formwork system perfectly meets our requirements and is an ideal choice for the project. The system helped us in decreasing the manpower and gave us a time benefit.”

**Mr. Jeet Chavda**, Director, Chavda Infra Ltd.

# GRIDFLEX for Ahmedabad’s first Twin tower

Trogon Twin Towers, Ahmedabad



**Ahmedabad's first Twin Tower architecture is set to become iconic as Trogon Twin Towers take shape at one of the most progressive "city-junctions," the Ahmedabad-Gandhinagar Twin City node.**

PERI provided HANDSET ALPHA for columns, shear walls and lift walls. The typical floor to floor height was 3.2 m and the slab thickness of 150 mm was cast for the project. Furthermore, the client needed a solution for slab with beam

bottom. PERI provided GRIDFLEX with MULTIFLEX for slab. For beam bottom, we provided MULTIFLEX with Props and PERI UP MI shoring system. The depth of the beam bottom was 900 mm at the periphery and 600 mm in interior.



# Holistic Formwork for Commercial tower

M-Kautilya, Pune



The project, located in Viman Nagar, Pune spans a built-up area of 12,75,209 square feet and features a comprehensive design with 13 floors. The entire development is scheduled for completion within a duration of 695 days highlighting its expansive scale and detailed construction plan.

PERI provided complete solution with VARIO girder wall formwork system, RCS climbing system, SCS crane climbing system and BR shaft. In total, PERI supplied 18 units of BR shaft climbing unit, 8 units of SCS crane climbing system and 21 units of RCS climbing system. SCS was supplied for the basement level and RCS, BR and VARIO was supplied for the typical floor.



"We utilized numerous PERI systems for this project. Their involvement was outstanding, offering a comprehensive formwork solution tailored to the project's requirements. Their overall solution and on-site support from engineers significantly enhanced cost-effectiveness. Additionally, their expertise facilitated smooth operations and timely completion ensuring that we met all the project deadlines."

**Mr. Saurabh Jangle**, Director – S J Contracts Pvt Ltd

## PERI SCS System for single and double-sided application

SCS serves as a load-bearing structure for supporting single-sided, non-tied or double-sided, anchored wall formwork. The SCS Climbing System is characterized by a high level of cost-effectiveness as the modular concept with multi-piece brackets facilitates optimum adaptation to suit project-specific requirements and geometries. Few significant advantages are, large crunable climbing units, material – optimized solution and safe horizontal working areas.



“After thorough consideration of design and safety requirements, we chose to implement a holistic formwork system solution from PERI. We selected the HANDSET ALPHA for wall formwork, ALPHADECK for slab formwork, and MULTIFLEX for versatile formwork needs. Throughout the project, PERI's sales and design teams were deeply involved, providing invaluable support in finalizing the design and ensuring timely delivery of the systems. The PERI products performed exceptionally well, greatly contributing to the project's success. We look forward to continuing our collaboration with PERI for future projects.”

**Mr. Dipak Gajjar**, Director, SHC Projects Pvt Ltd

# Exhaustive formwork solution for Gujarat's tallest building

Titanium World Tower, Ahmedabad



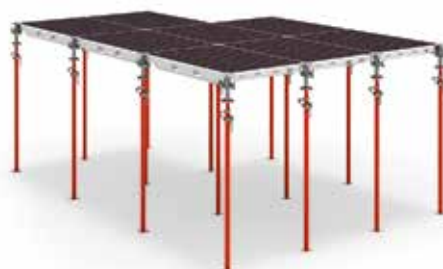
Titanium World Tower is the tallest building in Gujarat. It is an impressive addition to the skyline, standing as a brilliant symbol at the intersection of S.G. Highway, Ahmedabad. An innovative declaration in which architecture gives the user the ability to effect significant change or to stand as a model of prosperity, success, and inspiration for future generations. Rising to a symbolic 173 meters, this workplace space is secure and sustainable.

PERI provided the entire solution with HANDSET ALPHA for wall and column formwork and ALPHADECK with MULTIFLEX for slab formwork. The floor-to-floor height cast was 3.4 m and the slab thickness cast varied between 225 mm to 550 mm. Drop head mechanism of ALPHADECK Panel Formwork and early striking methodology has been helpful for client to achieve slab cycle early. Additionally, 13 units of BR Shaft platforms were provided for the lift shaft within the required time at site.

## ALPHADECK Panel Slab Formwork

The intuitive slab formwork with fast cycle times and low material requirements

ALPHADECK Panel Formwork is the preferred choice for customers looking to switch to system formwork. Particularly in the case of flat slabs with large spans, ALPHADECK is the ideal solution for completing concreting sections as quickly as possible. ALPHADECK stands out due to its particularly efficient material management characteristics. Given that it consists of only three basic parts – panel, head and prop – material requirements on the construction site are significantly reduced.





# PERI Shore for Hospital Building

Homi Bhabha Cancer Hospital, Muzaffarpur

---



Newest member institutions of the Tata Memorial Centre (TMC), it is dedicated to the ethos of pioneering affordable cancer care in India and is situated in Muzaffarpur, Bihar.

The customer wanted solution for 4 nos. of Linear accelerators (bunkers) in the Radiotherapy building which are very typical structures with slab thickness of 2.3 m and the floor-to-floor is 4.5 m.

PERI provided solution with specially designed PERI SHORE Tower system for slab and HANDSET ALPHA formwork system for walls. We have successfully cast slab for these bunkers in a single pour using M40 concrete without any challenges.



## PERI Shore

The efficient shoring tower with high leg loads and system-integrated safety

The PERI Shore is a heavy-duty shoring system with a wide range of applications in bridge-building, high rise and industrial construction. It is a modular and flexible system with gravity lock technology which allows easy and safe assembly.

Thanks to its modular design, the PERI Shore is flexibly adaptable to any building geometry and wide range of applications.



**Mr. Chandu Venkata Ratnam**  
General Manager  
Sivanssh Infrastructure Development Pvt Ltd

“After brainstorming about design and safety parameters, I finally placed an order for a specially designed PERI Shore Tower system with VT 20 Alpha girders for deck slab and Handset alpha system for walls. During this journey there was a lot of cooperation and deep involvement of the PERI’s sales and design team in finalization of design and supply of systems.”

---

# Shoring for residential building using PERI UP MI

Lodha Casa Evergreen, Mumbai

---



**Casa Evergreen by Lodha offers finely designed apartments with expansive terraces offering 180-degree views of green surroundings and a peaceful stream. It is situated on the LBS Marg in Vikhroli, Mumbai. Efficient connectivity, speedy infrastructure expansion, and easy access to necessities are all guaranteed by the development.**

PERI provided the entire solution with HANDSET ALPHA formwork system for walls and MULTIFLEX with PERI UP MI shoring system for slabs and beam solution. PERI UP MI offered flexibility to design the shoring system as per the height and base. The floor to floor height was 3 m. With MULTIFLEX, every slab thickness, any ground plan and all floor heights can be formed. Depending on the load and height of the room, PERI UP MI modular scaffolding is used as shoring. The shoring system comes with gravity lock technology which ensures safe installation.

**Contractor** West Best Buildcon

# Multi-panel formwork system for columns

Raheja Mindspace, Hyderabad

---

**Customer was looking for a solution for retaining walls with embedded column formwork.**

In this project the column sizes get reduced by 150 mm for every two floors. All the column sizes and retaining wall formwork are executed very effectively.

PERI provided the entire solution with HANDSET ALPHA formwork system for retaining walls and columns. We cast a wall of height 4.2 m.

**Contractor**  
Larsen & Tourbo Limited





Contractor West Best Buildcon



# RCS with edge protection system for high-rise building

Sugee Marina Bay, Mumbai

**Sugee Marina Bay, an iconic luxurious residential tower nestled in the heart of Mumbai. Located in Worli Sea face, this prestigious address stands as a true testament to the allure of Mumbai's offerings.**

The customer was looking for edge protection safety screen solution with 3 levels of platform and crane independent climbing as they had limited crane capacity. One of the challenges faced was that the project was nearer to the sea which means high wind velocity at all times. PERI provided the complete solution with hydraulic climbing RCS P system. PERI supplied total 24 units of RCS P edge protection system with 200 RMT screens and 8 units of BR shaft systems for lift shaft as working platform handled with crane. Our systems provided safety and helped to increase the speed of completion.

# PERI UP MI for Multi-Level Car Parking

MLCP, Vadodara

**The requirement of the client was a solution for slab and beam bottom formwork for the project. The main challenge for this project was to offer a solution for inclined slabs for 2-3 degrees.**

PERI provided complete solution with MULTIFLEX with PERI UP MI shoring system for slab and beam bottom formwork. The thickness of the slab and beam cast was 225 mm and 450 mm respectively.

The major advantage that was provided was that the system shifted completely without dismantling after fixing it for the first time. This provided time benefit and allowed to achieve the cycle time as per requirement.



**Mr. Alkesh Shah**  
Partner, Parikh Construction

"We adopted the PERI UP MI scaffolding system for our Multi Level Car Parking Project at Vadodara. We achieved enhanced labor productivity and construction within record time. PERI UP MI is versatile, light in weight and easy to handle."



# HANDSET ALPHA for sewage treatment plant

STP, Moradabad



**The government of India has approved the Namami Gange program as an integrated approach for effective abatement of pollution in the river Ganga.**

PERI provided solution with HANDSET ALPHA wall formwork system for the sewage treatment plant. The customer was looking for an easy to handle and ergonomic system in all aspects. The customer was offered training support and site supervision in addition to the system solution.



**Mr. Himanshu Gupta**  
Purchase and Project Head, GA Infra Prvt Ltd

“When compared to traditional shuttering, the number of support members is much lower, which shortens the project's total construction duration. Therefore, for our critical path structures, we choose to use PERI system formwork. It made it possible for us to pour enormous walls ranging in height from 2.4 to 3.6 meters. Using PERI HANDSET ALPHA, the concrete works' finishing quality meets international requirements. Our decision to use PERI formwork has allowed us to finish this project ahead of schedule.”

# RCS climbing system for safe working at heights

Bhojwani Towers and Rustomjee La Vie, Mumbai

**Two of the upscale high-rise residential projects in Mumbai are the Bhojwani Tower located in Lower Parel, Mumbai and Rustomjee La Vie in Thane.**



For Bhojwani Towers, PERI provided solution for staircase walls with RCS CL climbing system. Along with this, PERI also provided solution with hydraulic climbing RCS P edge protection system which covered a periphery of 2793 m<sup>2</sup>. For the basement, PERI provided complete formwork solution with HANDSET ALPHA System for walls, columns and foundation. For Rustomjee La Vie, we provided complete formwork solution for the project with HANDSET ALPHA. It is a crane-independent formwork system.

**Contractor**  
Talib & Shamsi Construction Pvt Ltd





# Lightweight formwork system for retaining and core walls

Kasturi Catalyst, Pune

The Catalyst is a vertical commercial office development designed to meet the modern grade-A requirements of large IT/ITeS, manufacturing and Banking and Finance companies of the era. It is located in Pune's beating micro markets of Baner-Balewadi.

PERI provided the entire solution with HANDSET ALPHA for retaining walls, columns and core walls. HANDSET ALPHA was used to cast a wall height of 3.6 m. Additionally, we also provided customized steel panels for the project.



"PERI's system has reduced number of support elements that significantly shortens the overall construction timeline for the project. The major benefits include a high-quality concrete surface finish and a comprehensive solution for constructing curved walls. Additionally, the system is crane-independent and features modular panels suitable for walls, columns, and retaining walls. The site execution and design support are also great."

**Mr. Yashvardhan Agarwal**, Promoter and Director, Kasturi Group

# SCS Climbing system for Preheater building

J K Cement Preheater building, Panna



**JK Cement Works, Panna is a wholly owned subsidiary of JK Cement Ltd. and is situated in the central region of India in Panna District, Madhya Pradesh.**

The installation capacity of the plant is 2.64 MnTPA of clinker and 2 MnTPA of cement. The client asked for a modular system formwork for columns and crane climbing system as a working platform. The total height of preheater building is 175 m.

PERI provided solution using HANDSET ALPHA wall and column formwork system and cast a wall of

thickness 900 mm. PERI also provided SCS crane climbing system as a working platform for 8 columns. Our systems eliminated the usage of huge quantity of staging at site.

**Contractor** Pylon Projects Pvt Ltd



# Comprehensive formwork solution for Institution

Anant National University,  
Ahmedabad

**Situated in Ahmedabad, Gujarat, Anant National University is a private institution and also one of the largest design university in India.**

Customer was looking for a fair finished solution for walls and columns for the entire project. This was a challenging project as the customer wanted to cast walls for different heights and wanted to use self-compacting concrete (SCC) for the project.



PERI provided solution for the entire project by VARIO wall formwork system. The formwork system was designed for casting a wall of height 4.75 m using SCC concrete with a pressure of 120 KN/sqm. The wall thickness cast was 350 mm. The outcome serves as a testament to the potential of thoughtful design and advanced construction techniques in shaping the environment.

**Contractor** TATA Projects Ltd

**Sanskardham, a contemporary co-educational facility with a strong foundation in the traditional ideals of the Gurukul system and an emphasis on learning without limits, is situated in the pleasant suburbs of Ahmedabad.**

**Contractor** Riviera Infraprojects



One of the challenges faced in the project was that the project had to be completed within a strict timeline. The customer was in search of solution for the entire project.

PERI provided complete solution using HANDSET ALPHA formwork system for walls and columns. We cast a wall of thickness 350 mm and a height of 3 m. PERI also provided ALPHADECK with MULTIFLEX for slab and beam bot-

tom formwork. The typical floor-to-floor height was 3750 mm. The slab thickness cast using ALPHADECK was 250 mm. PERI UP MI shoring system was supplied as a solution for peripheral beams. HANDSET ALPHA formwork system has high number of repetitions which helps to make the project cost effective. The overlapping of the slab girders and variable positioning of the main beams ensure maximum flexibility in MULTIFLEX.



# MULTIFLEX for a Shopping Mall

Phoenix Mall, Kolkata

**Phoenix Mall, Kolkata is Spread across ~7.5 acres of the land parcel at Alipore, Kolkata. It is East India's largest mall. Alipore is a well-established neighborhood renowned for its first-rate connectivity & infrastructure.**



Client was looking for a complete solution for slab and walls. The whole plan was divided into core, non-core and multi-level parking area. Our engineering solutions effectively resolved the critical issue of not anchoring the PT beam.

PERI provided complete solution with MULTIFLEX with PERI UP MI shoring system for slab formwork. The slab height varied between 4.4 to 4.7 m with different slab thickness. HANDSET ALPHA formwork system was provided for walls.

**Contractor** ITD Cementation India Ltd

# SCS Climbing and PERI UP MI staircase solution for Silo

Piramal Silo Project, Kosamba

**The height of the RCC Silo in this project is 26.5 meters.**

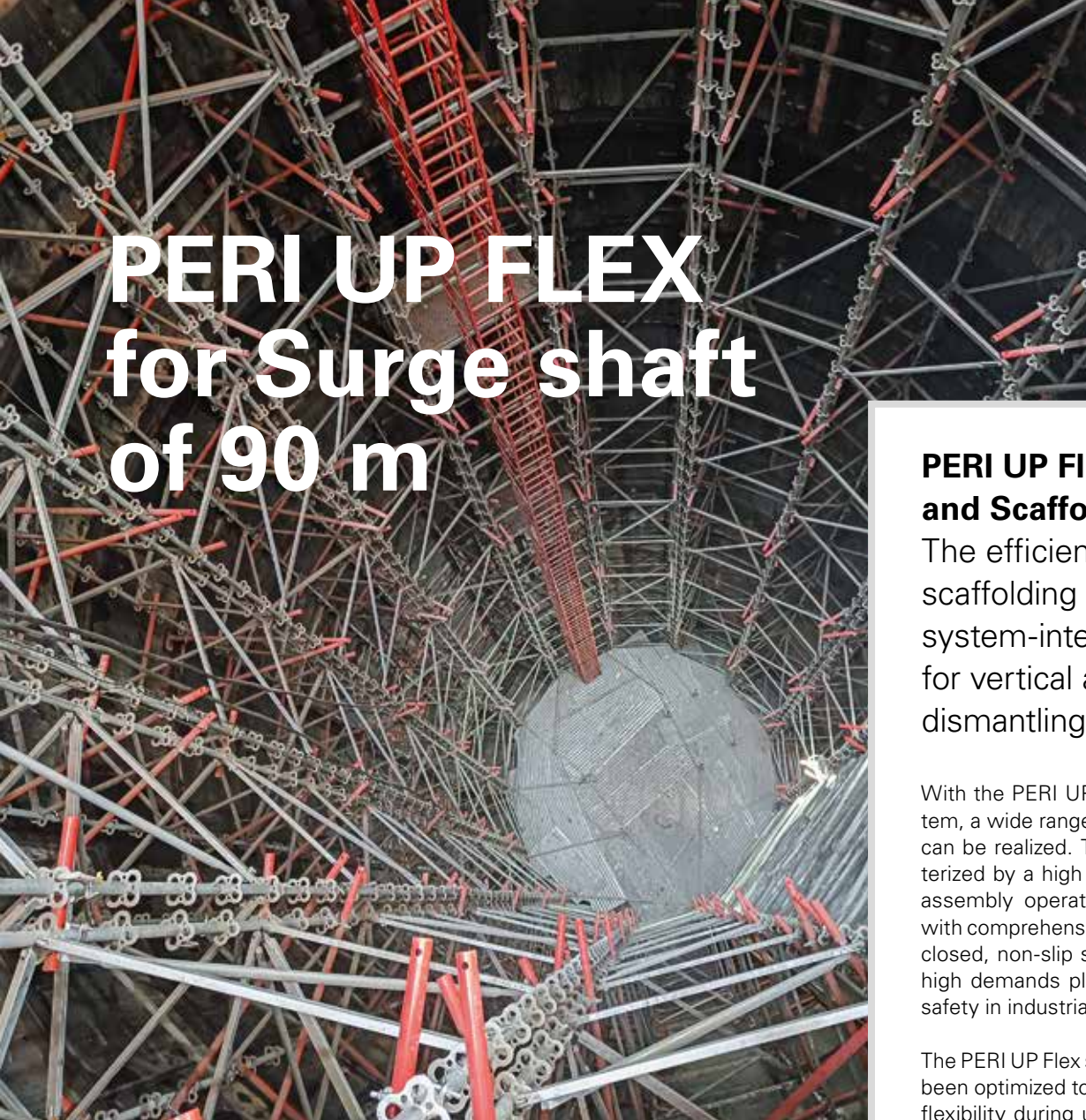
The requirement of this project was for a modular wall formwork system, staircase and crane dependent climbing system for walls, raft, columns and beam sides of the Silo. PERI provided solution with HANDSET ALPHA formwork system for casting of 3.6 m height of wall at once. Furthermore, This system gives a very safe working environment at any height for our workers. Additionally, PERI UP MI Stair Tower for access purpose was supplied for a height of 28 m.



“Industrial construction projects require robust and versatile systems to ensure efficiency, safety, and precision. PERI provides several innovative solutions that enable us to work with ease, safety and advanced equipment to deliver the best results at our construction project sites. The PERI team has become an integral part of our team. ”

**Mr. Amit Shah**, Director, Shree Mahavir Construction





# PERI UP FLEX for Surge shaft of 90 m

## Surge Shaft, Himachal Pradesh

This was a critical project as it was in a hilly area and needed the highest safety standards. The customer required solution for placing steel liners in the Surge shaft.



PERI provided solution with PERI UP FLEX scaffolding system. The height of the scaffold system was 90 m high. We provided working circular scaffold which will cover the entire area from bottom to top.

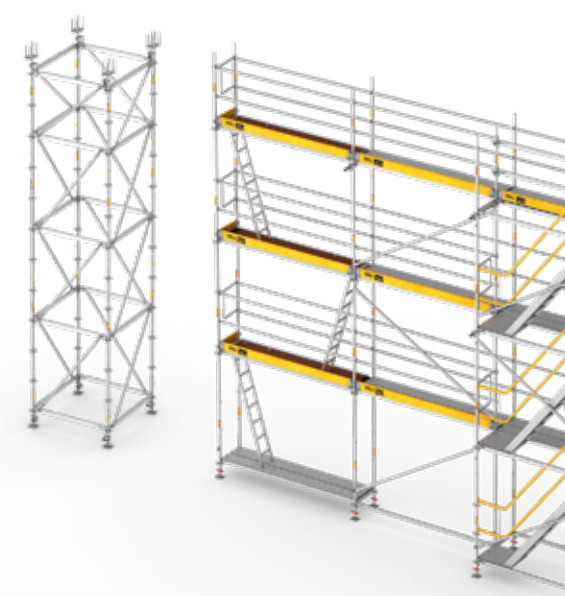
**Contractor** Statkraft India

### PERI UP Flex Shoring and Scaffolding system

The efficient shoring and scaffolding system with system-integrated safety for vertical assembly and dismantling

With the PERI UP Flex scaffolding system, a wide range of working platforms can be realized. The system is characterized by a high level of safety during assembly operations and during use; with comprehensive side protection and closed, non-slip surfaces, it meets the high demands placed on occupational safety in industrial applications.

The PERI UP Flex scaffolding system has been optimized to ensure a high level of flexibility during use. For this, all components of the system are based on a consistent metric length and width grid arrangement of 25 cm. This allows any directional change of the decking to take place within the scaffold bays.





# System formwork solution for beam and slab

Rubamin Project, Halol



**The Administrative Building has been designed as two blocks with a courtyard in between. It communicates ideas of sustainability by looking at processes for food production, energy efficiency, and pure air.**

PERI provided PERI UP MI shoring system with UZR solution for slab and beam bottom formwork where there was no support required for slab formwork separately. The shifting of PERI UP MI has been done horizontally and vertically without dismantling the system. Additionally, we provided HANDSET ALPHA formwork system for columns. The floor-to-floor height to be cast was 7 m and slab thickness was 150 mm.

“PERI’s expertise was instrumental in delivering an effective solution for our project. We utilized the PERI UP MI shoring system with the UZR solution, as well as the HANDSET ALPHA formwork system which proved highly beneficial. The system’s flexibility and efficiency played a crucial role in meeting the project’s requirements. The ability to shift the PERI UP MI towers without dismantling them was a significant advantage, allowing for smoother transitions and maintaining productivity. We are extremely pleased with the outcomes and look forward to collaborating with PERI on future projects.”

**Mr. Sanjay Desai**  
Director, Desai Construction

# Versatile panel formwork solution for Center of learning

Civil Service College, Mauritius

**Civil Service College is an educational institute located in Mauritius. The customer was looking for a versatile panel formwork for columns and retaining walls for the entire project.**

PERI provided solution using HANDSET ALPHA formwork system for columns and retaining walls. The formwork height of 3.90 m was cast using the system. Better productivity at the site and efficient use were guaranteed by optimum panel sizes. In addition, it provided the necessary concrete finish quality and usage repetitions.



**Contractor** Tayelamay and Sons Enterprise Ltd.

# LIWA formwork for Spiritual building

Isha Foundation, Coimbatore

---



**The volunteer-run Isha Foundation seeks to improve everyone's physical, mental, and spiritual well-being.**

The customer have purchased the system formwork for the first time. Previously, they were using conventional systems.

PERI provided complete solution with LIWA steel panel formwork system for walls and columns & MULTIFLEX system for slab and beam. LIWA was used to cast a wall of 3 m height. LIWA is a steel panel formwork and deliberately dispensed with more elaborate equipment features in favor of lower investment costs.

**Contractor** Isha Foundation

# Crane-free panel formwork for columns

Adani Link Bay, Mumbai

---

**Adani Link Bay is a luxurious residential building in Andheri, Mumbai.**

PERI provided solution with HANDSET ALPHA formwork system for core walls, foundation and retaining walls. HANDSET ALPHA is a steel panel formwork and can be used for walls and columns. It is a crane-free modular formwork system. In this project, wall of height varying from 3 to 4.5 m was cast with PERI formwork system.

**Contractor** KEC International Limited





# RCS P edge protection for the largest urban renewal project of India

Saifee Burhani Upliftment Project (SBUT), Mumbai



**Covering a 16.5-acre expanse, the redevelopment project encompasses over 250 dilapidated buildings, housing 3200 families and 1,250 shops.**

The entire area is divided into functionally appropriate spaces, with buildings gradually increasing in height from south to north to minimize heat retention and maximize natural ventilation and daylight within the apartments.

The customer was looking for hydraulic self climbing edge protection system for the entire project. PERI provided solution with RCS P edge protection system. In total, 53 units of RCS P was supplied. The climbing protection panel basically consists of two bracket structures which are connected to each other by means of work platforms and the enclosure.

**Contractor** Kalpataru Power Transmission Limited

## Efficient formwork solution for mid-rise building

Adani Paarijat, Ahmedabad

**Adani Paarijat is a residential building with luxurious apartments in Shantigram, Ahmedabad. They were looking for a efficient formwork solution provider for slab formwork system.**

PERI provided solution with MULTIFLEX girder formwork system for slab and beams. Props were used for Internal beams in the building and PERI UP MI shoring system was used for peripheral beams to cast a typical floor to floor height of 2975 mm. This solution has reduced the cost of beam bottom formwork and increased the productivity of execution at site.



“PERI system has performed very well in this project. The system Handset Alpha is light in weight and the number of components is low which makes it easier to shift, install, stack and assemble. They are always ready with open arms to solve the any issue whether it being related to site supervision or design.”

**Mr. Paras Shah**, Director, Emboss Construction Pvt Ltd





# Technopolymer formwork system for high rise building

Golf Hills, Gurgaon

Aptly named M3M Golf Hills 79 is an exquisite luxury project with an aesthetic design and ultra-modern master plan that caters to the up-market needs of the discerning property buyer.

The customer was looking for a lightweight system for retaining walls. PERI provided solution with DUO techno polymer formwork system. The system was provided to cast a wall of height 4.5 m in height. This formwork system helped to increase the productivity and cost efficiency of the construction site significantly.

**Contractor** M3M India

## DUO

### Wall + slab = one system

Lightweight universal formwork for walls, slabs, Columns and foundations



The material is very light compared to steel or wood. This allows for faster, more ergonomic work processes and saves on crane time requirements. Versatility is the key advantage of DUO universal formwork. On a consistent basis, the DUO concept reduces the number of different system components that are required, allowing you to apply the concept universally to your project.

This concept also supports the principle of sustainability: The energy requirements of your logistical processes will fall on account of reduced transportation and considerably lower transport weights.



# News

## Seminars and Events

### BAUMA 2023

Presenting our portfolio of formwork and scaffolding solutions, we participated in the event. Visitors engaged to the exhibition very well, and PERI's cutting-edge formwork technology was greatly acknowledged.

Beyond being the world's largest trade show for construction, building supplies, mining equipment, construction vehicles, and construction equipment accessories, BAUMA is the international success engine, catalyst for innovation, and marketplace.



Seminar by **Builders' Association of India** on Rapid Construction Technology for High Rise buildings". It was conducted on 16th February 2024 in Ahmedabad, Gujarat.

## PERI Components

Accessories and commodities for daily use at construction sites



**Girders**



**Plywood**



**Props**



**Tie System**

PERI has range of accessories from grades of plywood to release agents. With these various system components PERI offers support to all kinds of construction sites.

# PERI Academy



PERI Academy conducts comprehensive sessions for our staff and clients, providing detailed information about our product offerings. These sessions aim to deepen understanding of our company and its solutions, ensuring that all participants are well-informed and prepared to utilize our products effectively. By fostering knowledge and engagement, we strive to empower our team and clients to make informed decisions that drive success.

## PERI – The service provider, offering more than just products



### Rental Service

Large rental fleet with cleaning and repair services



### Pre-Assembly Service

Systems can be pre-assembled at PERI facilities and sent on-site



### Engineering and Software

Efficient formwork planning and design through use of PERI CAD software



### Site Supervision

Provided to ensure efficient use of systems





**Formwork Scaffolding Engineering** [www.peri.in](http://www.peri.in)